



A CSW Industrials Company

# metacaulk® Intumescent Sleeve

A faster way to firestop fluted decks & angled penetrations

## Flexible Design

- Ideal for retrofit
- Conforms to contours of pipe



US Patent No 6,207,085

## Simple & Quick Installation

- No attachments to floor or wall
- No measurement of materials



## Tested & Compliant

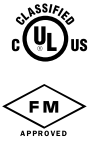
Tested in accordance with ASTM E814 (UL 1479)  
Complies to UL required Accelerated Aging & High Humidity Testing



# Metacaulk® Intumescent Sleeve

## Firestop Device

Code	Description	Qty.
66584	For 2", 3" & 4" Pipe	6
66582	For 6" & 8" Pipe	1



### FEATURES

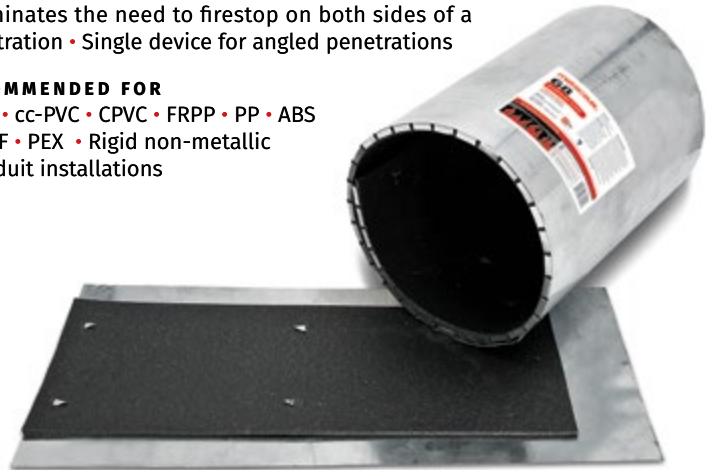
- No steel bolts or fasteners
- Can be retrofitted
- Flexible
- Tested in accordance with ASTM E814 (UL 1479)
- Complies to UL required Accelerated Aging and High Humidity Testing

### APPLICATION

- Firestop through penetrations with a single sleeve
- Ideal for combustible pipes penetrating a concrete fluted deck assembly
- Eliminates the need to firestop on both sides of a penetration
- Single device for angled penetrations

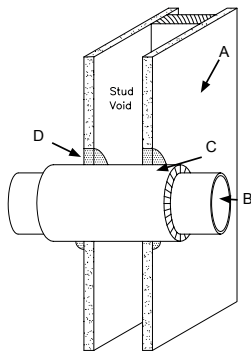
### RECOMMENDED FOR

- PVC • cc-PVC • CPVC • FRPP • PP • ABS
- PVDF • PEX • Rigid non-metallic conduit installations



US Patent No 6,207,085

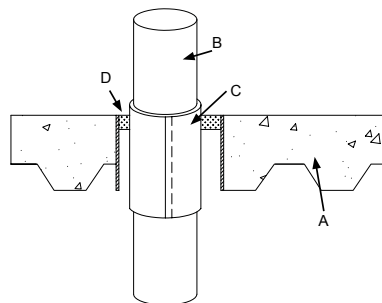
Description	Trade Size	Outer Diameter
2" 3" & 4" Sleeve	2.0 in. (5.08 cm) - 4.0 in. (10.16 cm)	2.375 in. (6.03 cm) - 4.5 in. (11.4 cm)
6" & 8" Sleeve	6.0 in. (15.24 cm) - 8.0 in. (20.32 cm)	6.625 in. (16.8 cm) - 8.625 in. (21.9 cm)



Plastic pipe through Gypsum Wall Assembly - 1 or 2 hour (UL W-L-2185)

- A. One or 2 layer gypsum wall-board assembly
- B. Max 8 in (203mm) PVC, CPVC, or rigid non-metallic pipe
- C. Sleeve secured with electrical tape, duct tape, fiberglass tape, hose clamps, pop rivets or tie wires
- D. Sealant at a min. 5/8" (16 mm) depth

1. Using the Installation Chart, select proper size.
2. Determine the number of Sleeves required for application.
3. Determine method of fastening to be used (electrical, duct, fiberglass tape, pop rivets, hose clamps or tie wires).
4. For installation, wrap the sleeve around pipe above or below floor with intumescent side facing pipe, allowing bare metal end to overlap.
5. Secure the sleeve around pipe with either electrical tape, duct tape, fiberglass tape, pop rivets, hose clamps or tie wires.
6. Push the sleeve through opening/ assembly so it is even with floor and/or ceiling or centered in wall. Consult UL design for specific installation.
7. Fill annular space with required type and depth of sealant required.



Plastic pipe through Concrete Floor Assembly - 2 hour (UL F-A-2217)

- A. Concrete floor capable of 2 hr rating
- B. Max 8 in (203mm) PVC, CPVC, or 6 in. RNC
- C. Sleeve secured with fiberglass tape, hose clamps or pop rivets
- D. Sealant at a min. 1/2" (13 mm) depth

**RectorSeal®** 2601 Spenwick Drive - Houston, TX 77055 800-231-3345 [rectorseal.com](http://rectorseal.com)

A CSW Industrials Company. RectorSeal, the logos and other trademarks are property of RectorSeal, LLC, its affiliates or its licensor's and are protected by copyright, trademark and other intellectual property laws, and may not be used without permission. RectorSeal reserves the right to change specifications without prior notice.

©2019 RectorSeal. All rights reserved. R50356-0119